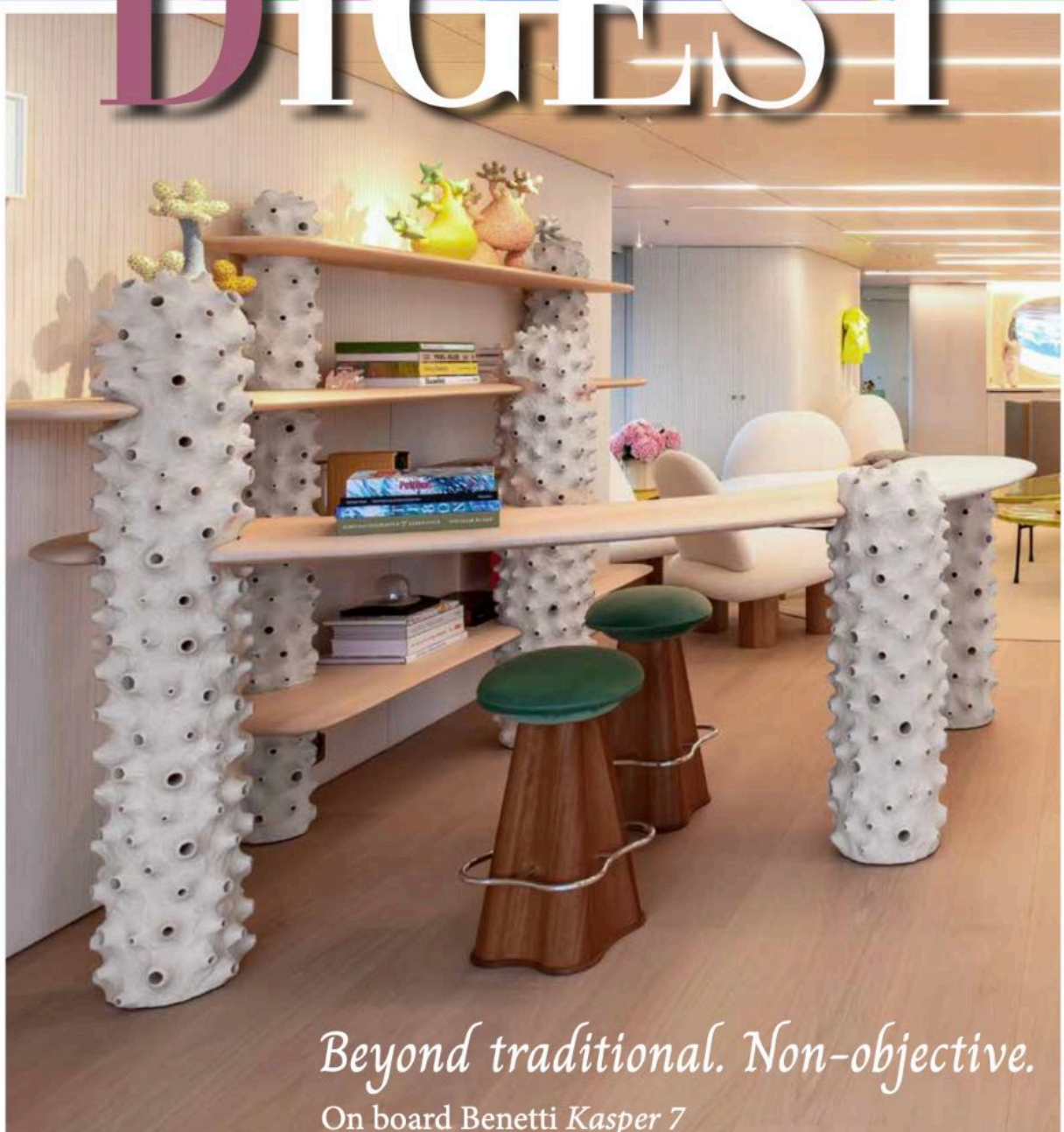


Aesthetic manifesto in the art of yachting

ISSUE n. 23 - Year VIII, Volume 2 | Winter 2025-26

SUPERYACHT DIGEST



Beyond traditional. Non-objective.
On board Benetti Kasper 7

ISSN 2532-4284

50002



9 772532 428003

WINTER ISSUE | Italy 15.00€; Austria 15.50€; Belgium 16.00€; France 18.50€;
Principality of Monaco 18.50€; Germany 18.80€; Spain 15.00€;
Portugal 15.00€; UK 15£; USA 21.90\$

Artwork shown in the background
'SHAKU SHAKU DANCE'
By **BARBARA BAILEY-PORTER**
Courtesy of the artist

R

Built as requested

by Georgie Moray

CAMILA'S DESIGN - SHAPED AROUND THE OWNERS' REAL PREFERENCES - BEGAN WITH A CLEAR OBJECTIVE FROM AN EXPERIENCED OWNER: TO CREATE A SPACIOUS, MODERN, AND PERSONAL 50-METER YACHT, WITH LONG-RANGE CAPABILITY WITHOUT LOSING SIGHT OF COMFORT.

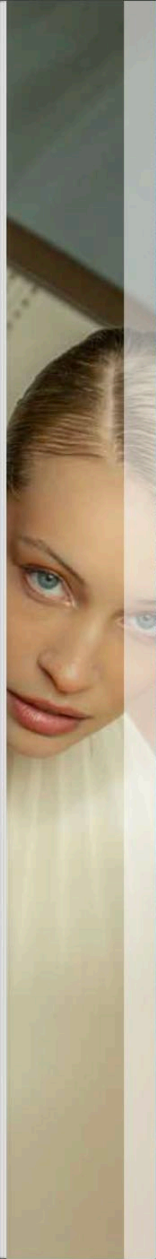
Photos © Bilgin Yachts

Following her successful delivery, M/Y *Camila*, the latest masterpiece in the shipyard's acclaimed 50-metre Bilgin 163 series, made her world debut at the 2025 Monaco Yacht Show. With exterior styling and naval architecture by **Unique Yacht Design**, *Camila* boasts a sporty silhouette that seamlessly harmonizes with her generous spaces.

Art and beauty

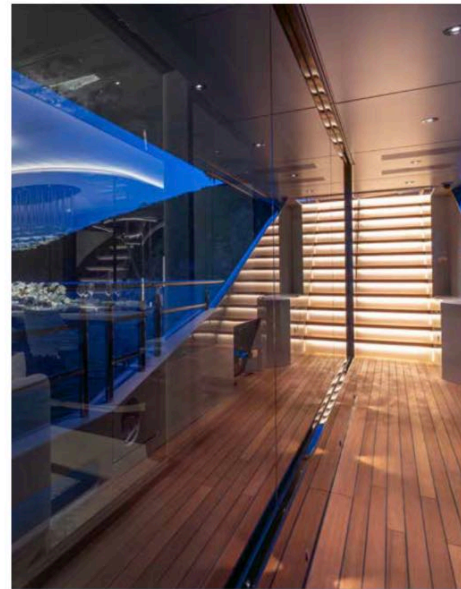
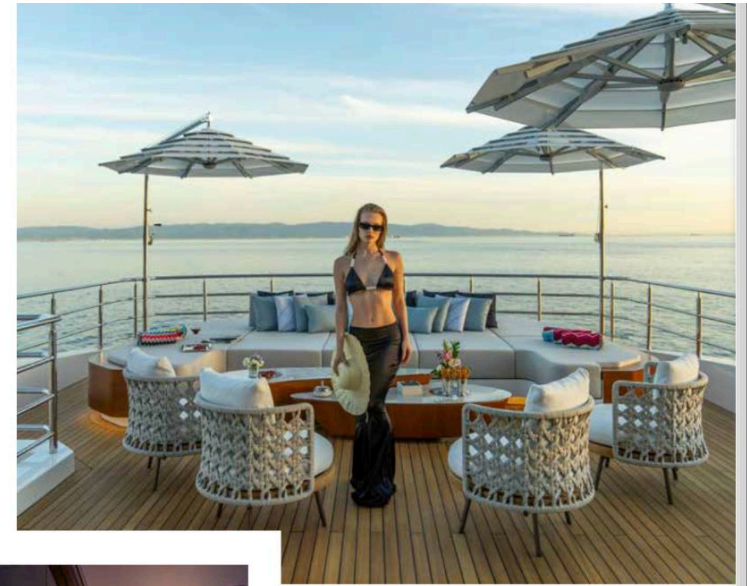
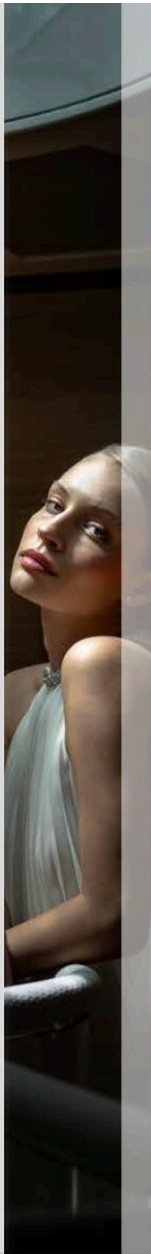
"Her design is a testament to the art of blending functionality with beauty," said **Emrecan Özgün**, founder of Unique Yacht Design. "What sets *Camila* apart is her enhanced volume crafted seamlessly into a sleek, fluid form. Every area is designed to bring guests closer to the sea while offering ample space for both social gatherings and quiet relaxation".





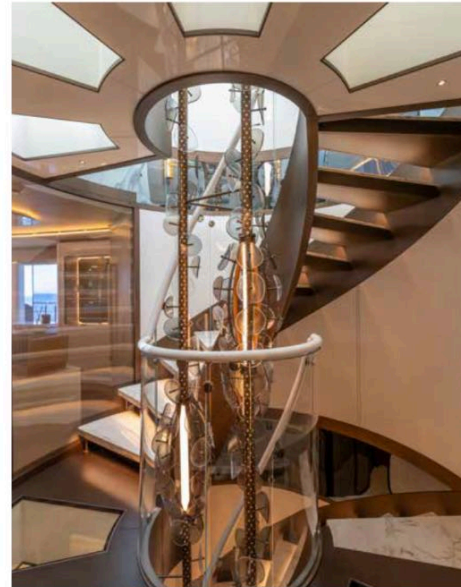
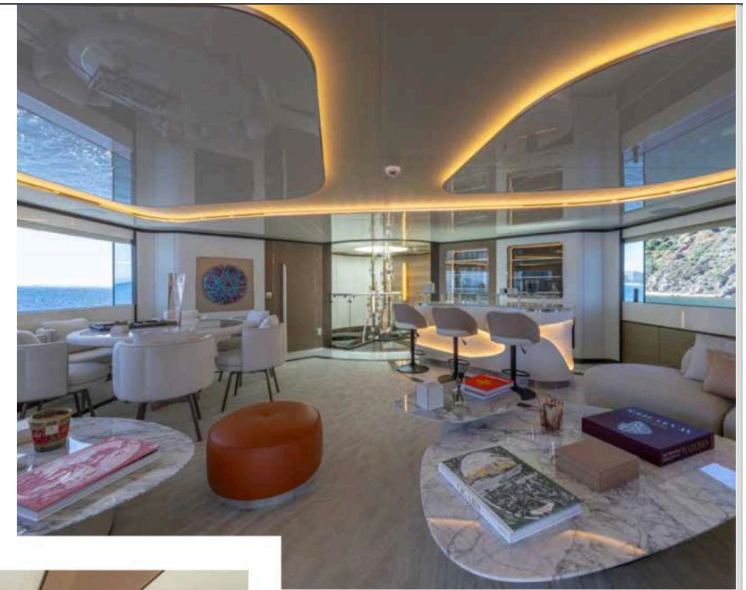
"We focused on continuity between spaces, connecting the main deck aft to the beach club and sea, while maintaining the clean, athletic lines that define the Bilgin DNA".

Modern and sophisticated, the yacht's interiors have been curated by **Hot Lab**. The 50-meter yacht *Camila* is their second collaboration with the shipyard, and represents a natural evolution of the design direction established for the brand. "Every element on board has been carefully crafted to offer both sophistication and comfort, while reflecting the refined style characteristic of Bilgin's fleet", states **Enrico Lumini**, Partner and Head of Design at Hot Lab.



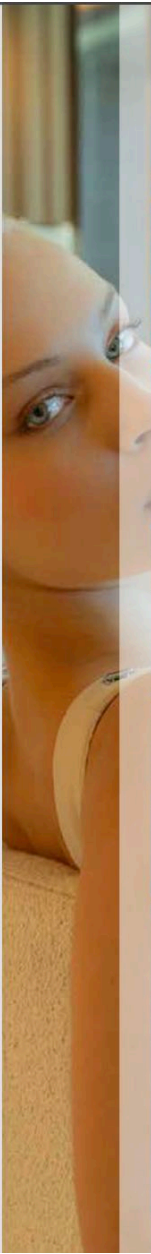
Camila was a deeply collaborative process, steered by an experienced owner and facilitated by FGI Yacht Group. **Frank Grzeszczak Jr.**, Vice President of FGI Yacht Group, said, "I feel honored to have merged this partnership between an experienced and demanding client, and Bilgin Shipyard. It has been nothing short of an exceptional experience".

According to Özgün, as a brand-new model, with 20% larger areas than 48-meter yachts, this yacht offers even more space for guests to enjoy.



Berkay Yılmaz, Commercial Director of Bilgin Yachts, echoed this sentiment, highlighting the owner's contribution. "I am grateful to work with an experienced yacht owner who was heavily involved with her design process with Hotlab. Her interiors have been described as a beautiful, bespoke homage to the owner's lifestyle, and the elegantly designed elements inside and outside made her a stunning yacht".

Powered by twin 1,450hp CAT engines, *Camila* reaches a top speed of 16.5 knots and offers an impressive range of 5,000 nautical miles at cruising speed -perfect for long, luxurious voyages. Her carefully considered layout maximizes both indoor and outdoor living, with expansive sun decks, a spacious beach club, and beautifully appointed guest suites that elevate the onboard experience.



“
**Exterior
Designers’
approach
to the project**
”

Words by
Emrecañ Özgün,
CEO of Unique Yacht

“Our approach to the exterior design in the Bilgin 163 series is centered on enhancing open-air living through thoughtfully arranged, spacious, and sheltered deck areas. As part of Bilgin’s semi-custom platform, this model offers owners a high degree of flexibility in customizing exterior furniture and features during the build process, allowing for a more personalized onboard experience.

Camila reflects this design philosophy with her well-balanced layout, generous yet refined. The 499 GT platform accommodates expansive areas for outdoor enjoyment, including a 21-meter sundeck, a 12-meter bridge deck aft, and a wide main deck aft that connects seamlessly to the beach club. These proportions create a harmonious relationship between the yacht and the sea, allowing guests to enjoy each level with comfort and ease, without adding visual weight to the yacht’s sleek and sporty profile.

What sets *Camila* apart is her enhanced volume -20% more exterior space than found on typical 48-meter yachts- crafted seamlessly into a sleek, fluid form. Every area is designed to bring guests closer to the sea while offering ample space for both social gatherings and quiet relaxation. We focused on continuity between spaces, connecting the main deck aft to the beach club and sea, while maintaining the clean, athletic lines that define the Bilgin DNA.

Through our close collaboration with Bilgin Yachts and the yacht’s experienced owner, we optimized *Camila*’s layout with bespoke enhancements. These include thoughtful reconfiguration of storage and sea toy placements: moving tenders forward to free up the aft sections, enabling a more spacious and serene environment in key guest areas. This intentional shift elevates not only the aesthetics but also the functional comfort of life on board.

Camila is a performance-driven platform designed with purpose. Her twin 1,450hp CAT engines deliver a top speed of 16.5 knots, paired with the low operational costs and stability expected of a full-displacement steel hull. From her broad, shaded decks to her powerful stance, CAMILA reflects the evolving priorities of luxury yacht owners -elegance, outdoor enjoyment, and seamless integration between engineering and design”. ■



V

Visionary, ocean-going range

by Camille Vaughan

WITH OCEAN-GOING RANGE, A SMARTLY DESIGNED LAYOUT, AND THE CAPACITY TO CARRY A LARGE TENDER, THE CROSSOVER 42 IS THE SMALLEST MODEL IN COLUMBUS' MODERN EXPLORER YACHT SERIES. THE FIRST UNIT, *BIG NAAN*, MADE HER GLOBAL DEBUT IN CANNES LAST SEPTEMBER, SETTING THE BEGINNING OF A NEW CHAPTER FOR COLUMBUS YACHTS.

Photos © Columbus Yachts

It's more than just a yacht. It's a vision sculpted in metal, an architecture of desires in motion. The Crossover line by Columbus Yachts represents the perfect fusion of luxury and versatility. Ideal for modern explorers, it offers flexibility and functionality without compromise. *Big Naan* is the first unit to take to the water and explore the future.

Luxury and versatility

Launched in May 2025 at the yard in Savona, *Big Naan* was built for an American client, introduced by Zarpo Yachts. The entire construction process was supervised by Trevor van Wyk, who also acted as Owner's representative.



Designed by **Hydro Tec**, with interiors by **Hot Lab**, *Big Naan* is a compact yet visionary 42-metre vessel with a displacement of 443 GT. Its muscular lines convey an explorer's soul, with angled surfaces and forward-pushed volumes. The steel displacement hull, with a bulbous bow and flat, harmonious aft sections, expresses power and grace, while the aluminium superstructure suggests lightness. *Big Naan* offers a spacious cockpit capable of housing a large tender (5.9 metres) operated by a crane recessed in the starboard bulwark, the first SOLAS-certified tender of this size.

An amazing swimming pool, holding 17 cubic metres of salt water and approximately 2-metre deep at its deepest point, is certainly one of the exterior key features and remains one of the largest on a vessel this size.



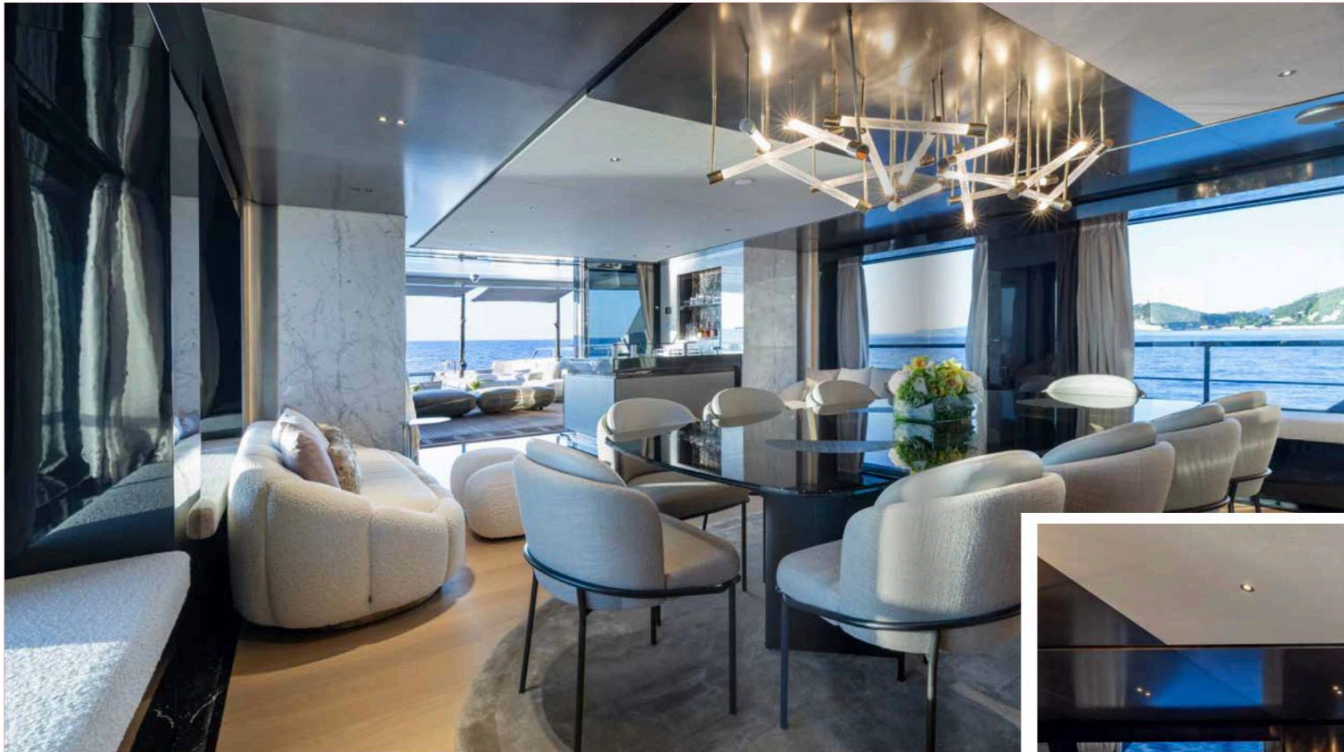
The swimming pool was designed to be structural to the hull, for its four glass walls provide natural light to the beach club area below. Located on the lower deck, the beach club is accessible via two hydraulic doors positioned to port and starboard of the aft swim platform. Here, natural light floods in through both the large side windows and the amazing glass swimming pool, creating a unique and harmonious atmosphere. The space, transformed into a gym with Technogym equipment, can be used as massage room or a spa.

The interiors are astonishing for their ability to combine rigorous design with an emotional and domestic dimension. Marble, precious metals, soft-touch fabrics, and pop art blend together in a multisensory narrative.

The layout, free of solid barriers, reflects the concept of integrating intimate areas into large public spaces to foster social interaction without compromising on privacy. The lighting, dramatic yet never invasive, helps shape the volumes and create atmospheres that change throughout the day, almost as if following the natural rhythm of the sea and the daylight.

The main salon stands out for its sophisticated chromatic harmony: neutral tones like warm grey, beige and cream are animated by splodges of bright colours introduced by cushions, artistic details, and designer furnishings. Striking pop artworks framed by marble surfaces add character and texture, helping define the space with an uncommon elegance. The micro-perforated metal ceiling, illuminated by sculptural light fixtures, amplifies the contemporary feel, while the marble cladding and dark wood panelling lend a precious and sophisticated touch.



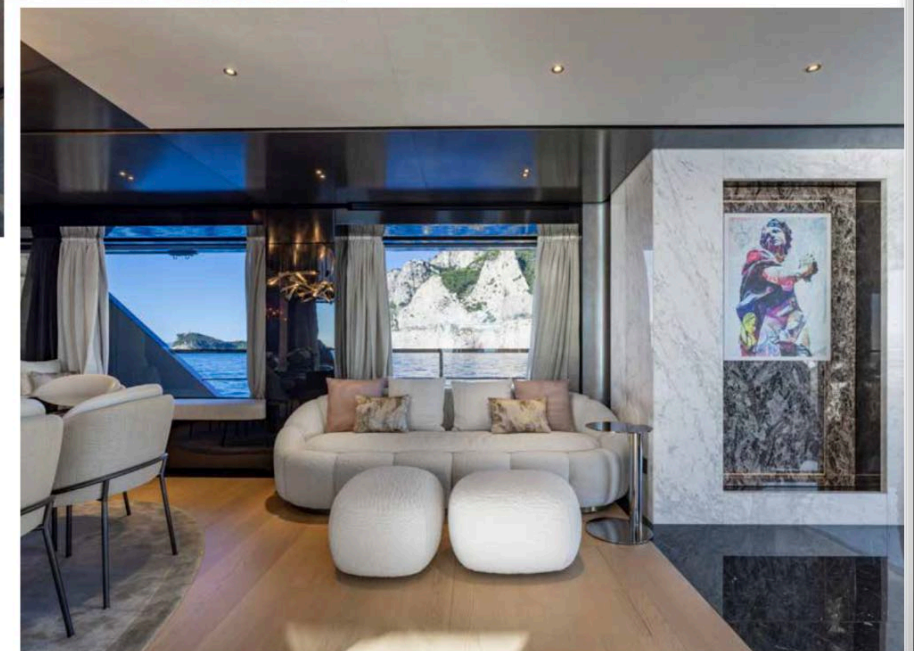


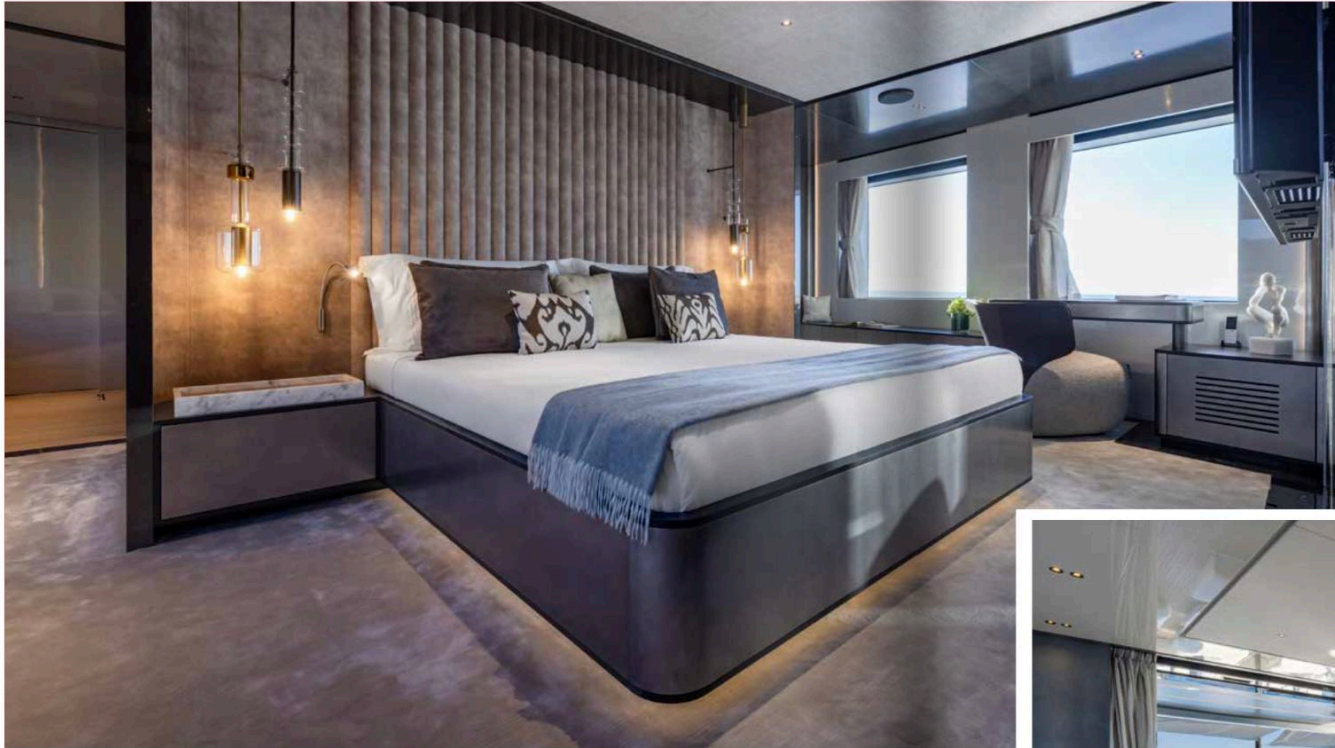
The central, intimate dining area is enhanced by a large, convivial custom Minotti table. A cascade of modern lighting creates a dramatic, welcoming atmosphere, perfect for glamorous or more intimate dinners.

In the lounge area, large seating and benches along the windows invite to relaxation, with the pastel shades of their cushions evoking the reflections of the sky and the sea. The colour palette is consistent throughout: light shades, metallic details, and glossy and matte surfaces alternate in a play of delicate contrasts. The fully customized metal American bar with a woven pattern welcomes guests upon arrival. A snack bar to the left, adjacent to the professional galley, completes the area.

The owner suite, located forward on the main deck, is a blend of elegance and functionality. At the entrance, there's a study with a grey leather-upholstered desk and shelves. Further along, there's the generously sized walk-around cabin with a large wardrobe, a vanity with an Amura armchair, and a marble bathroom with a double shower and separate toilet. Each space is versatile and multifunctional, and decorative objects and travel mementos further personalize the yacht, making it a true "home away from home."

The project stems from the desire to surprise combined with the search for a balance between innovation, art and nature. Lighting, another central element of the project, shapes the spaces and intensifies materials and volumes, conveying a sense of openness and well-being. The result is a superyacht that impersonates contemporary style with grace, where every detail speaks of comfort, elegance and versatility.





The spacious upper deck cockpit, furnished with conversation sofas, overlooks the media/gaming room, featuring a Minotti sofa and a large TV screen. The seamless connection between indoors and outdoors is ensured by two lateral sliding doors combined with a fully opening aft door.

The sun deck stands out for its generous dimensions (12m x 7 m), offering unmatched livability. Beneath the large hard top, there is a custom Roda teak table, a bar with stools, grill, refrigerator, and icemaker. The TV, equipped with an up-and-down mechanism, can rotate 360 degrees to serve all areas. At the bow, two conversation sofas create a welcoming lounge, while the aft area is completed by sunpads and additional seating.

Below deck, the four-cabin layout features: two VIP cabins, a guest cabin with a double bed, and a double cabin that converts to a triple with a pullman bed, all with spacious bathrooms. The nine-member crew is accommodated in four double cabins below deck, and the captain cabin is on the upper deck, adjacent to the wheelhouse.

Propulsion is provided by two 742 kW Caterpillar C32 ACERT engines, achieving a top speed of over 14 knots, and with a cruising speed of 12 knots. The approximately 60-cubic metre fuel tanks allow for a range exceeding 5,500 nautical miles at an economical speed of 10 knots. *Big Naan* is equipped with a selective catalytic reduction system that meets IMO Tier III emission standards, enabling her to cruise within marine protected areas.

Comfort at sea and at anchor is provided by two pairs of stabilizers ensuring excellent stabilization both underway and at zero speed. ■

